

INTEGRATING BIODIVERSITY

Management and actions

Jane Mauro

September | 2023

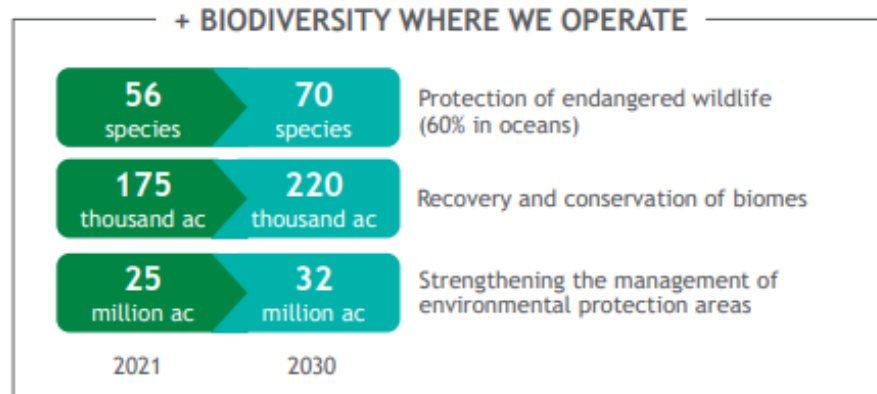
KEY ELEMENTS FOR MAINSTREAMING

- Direction: expected outcome
- Governance
- Guidelines
- Actions
- Partnerships
- Capacity building/dissemination

COMMITMENTS

PETROBRAS ESG STRATEGY (PE 2022-2027)

Gains in biodiversity

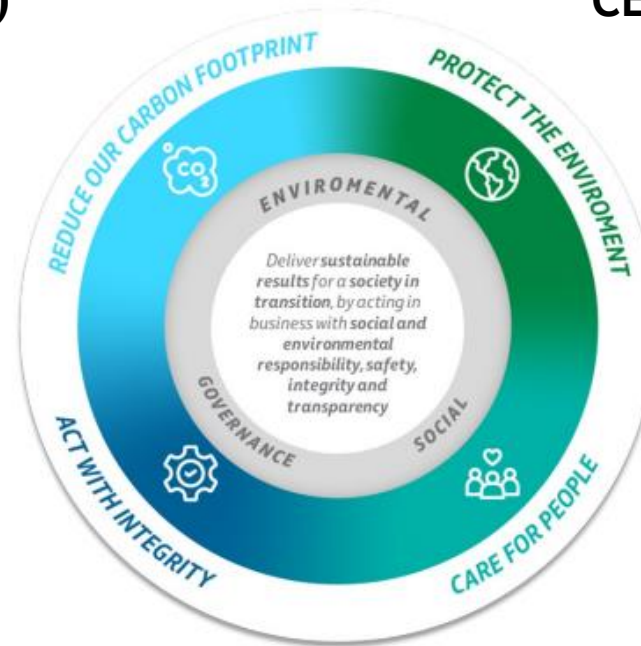


GOALS

100% OF OUR FACILITIES WITH A BIODIVERSITY ACTION PLAN BY 2025

<ul style="list-style-type: none"> Wildlife management plans Evaluation of impacts and dependencies of ecosystem services Net impact assessment KPI 	<ul style="list-style-type: none"> Improving biodiversity in our areas/regions of activity Search for net gain of vegetated areas
--	---

ac: acres

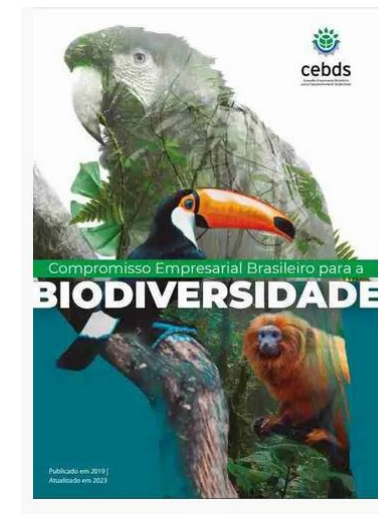


Biodiversity enhancement

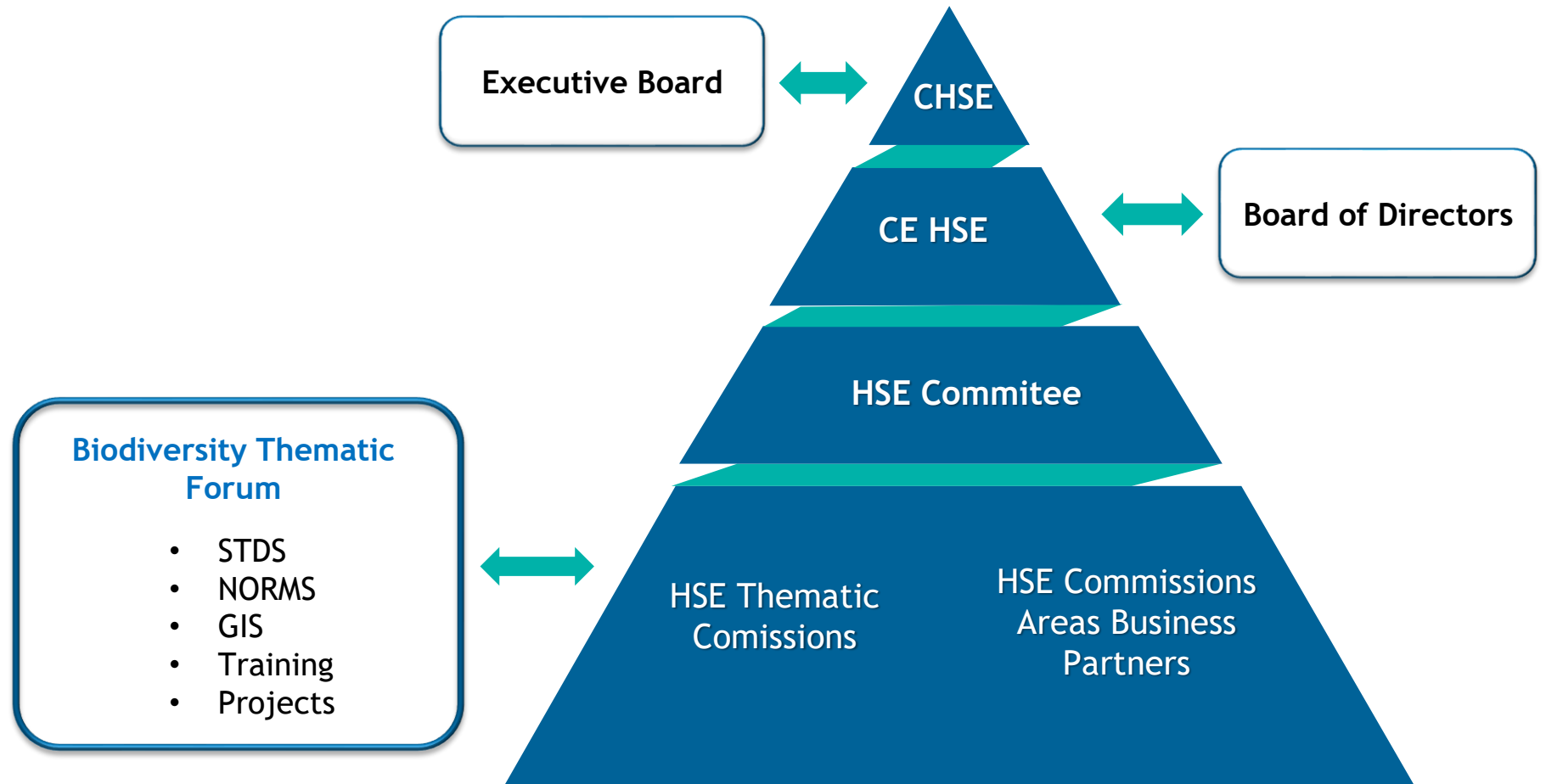
- Water security
- Circular economy
- Prevention and mitigation

CEBDS' BIODIVERSITY COMMITMENTS

- Mitigation hierarchy
- Studies, research projects, technology and innovation
- Knowing biodiversity, monitoring and measuring impacts and dependencies.



GOVERNANCE



GUIDELINES

- Biod. risk and impact management:
 - Mitigation hierarchy
 - BAPs
 - Annual Biodiversity Report

- Fauna management

- Operational STDs: offshore activities

- New Investments/Decommissioning



RECONCILING SUBSEA
ENGINEERING ACTIVITIES
AND SENSITIVE MARINE
ENVIRONMENTS



ACTIONS

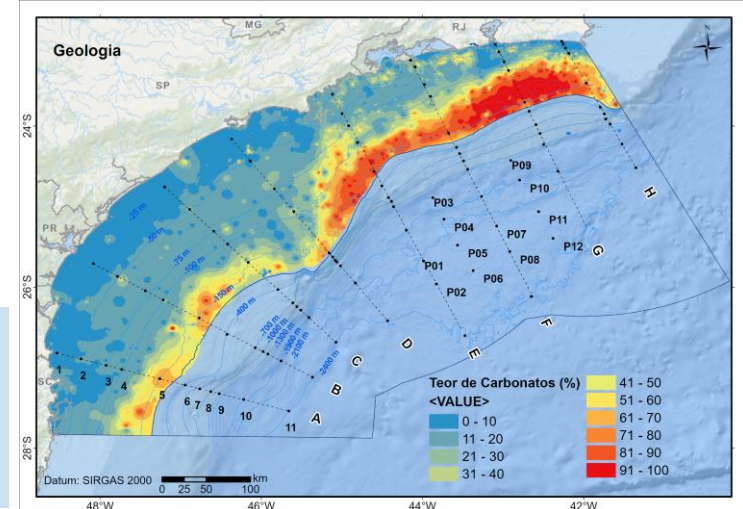
R&D

2023 - BRL 80 million

Research and technological solutions improving biodiversity where we operate

SANTOS BASIN ENVIRON. CHARACTERIZATION

- 350.000 km²
- 3.200 species catalogued
- 300 Brazilian researchers
- 68 scientific publications
- 356 sea days
- New occurrences/species
- 30 research lines
- Marine biodiversity legacy



PARTNERSHIPS

PETROBRAS SOCIO-ENVIRONMENTAL PROGRAM

236 fauna species

402 flora species

studied, monitored or protected

70 thousand people

involved or leading actions, including indigenous peoples and traditional communities as priority public

126 protected areas

strengthened, including Conservation Units, Indigenous Lands and Quilombola Territories

BRL 8 MM

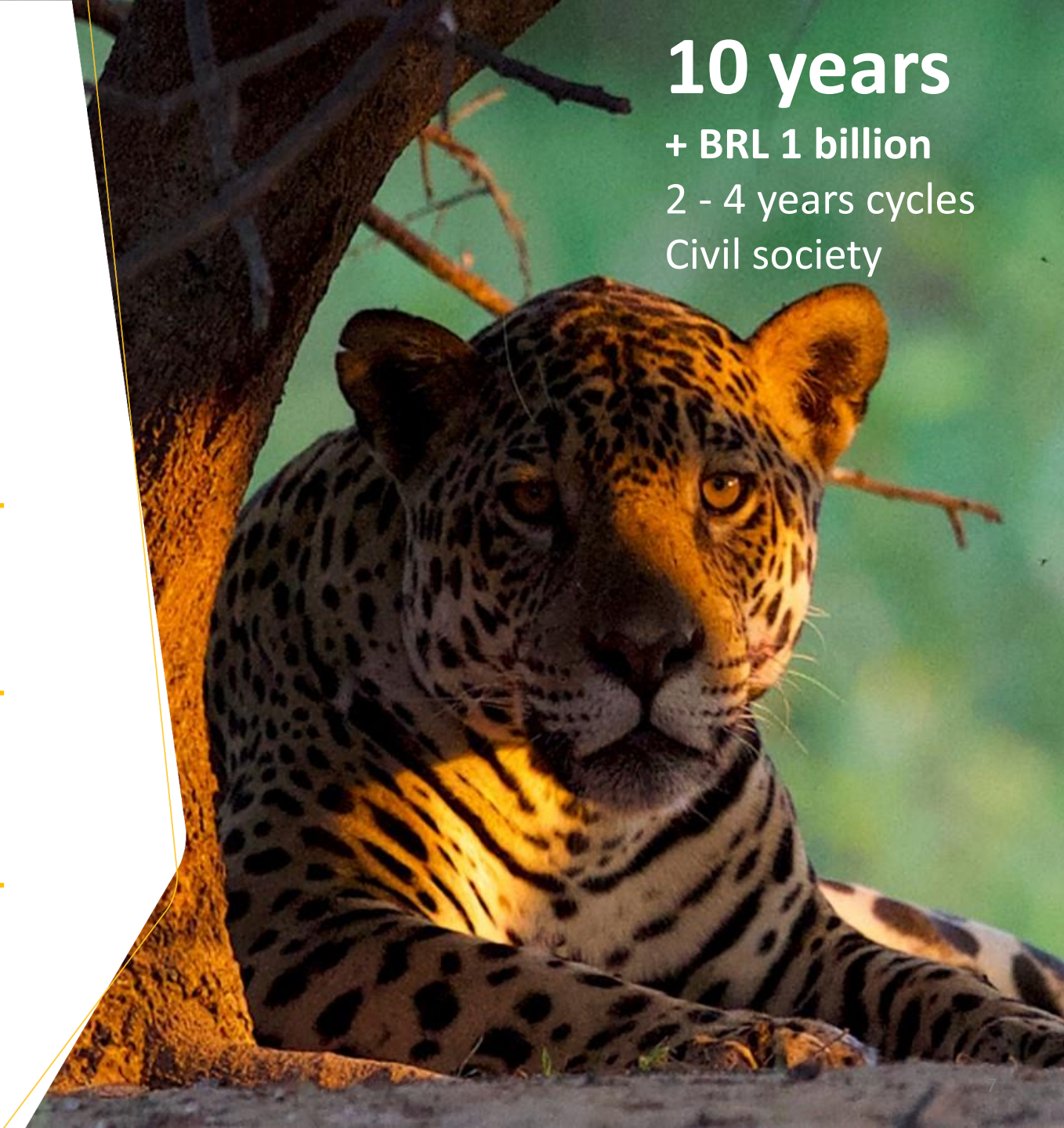
revenue in local businesses

10 years

+ BRL 1 billion

2 - 4 years cycles

Civil society



CAPACITY BUILDING/DISSEMINATION



BR PETROBRAS

Academia UP SMS
Uma aprendizagem comprometida com a vida

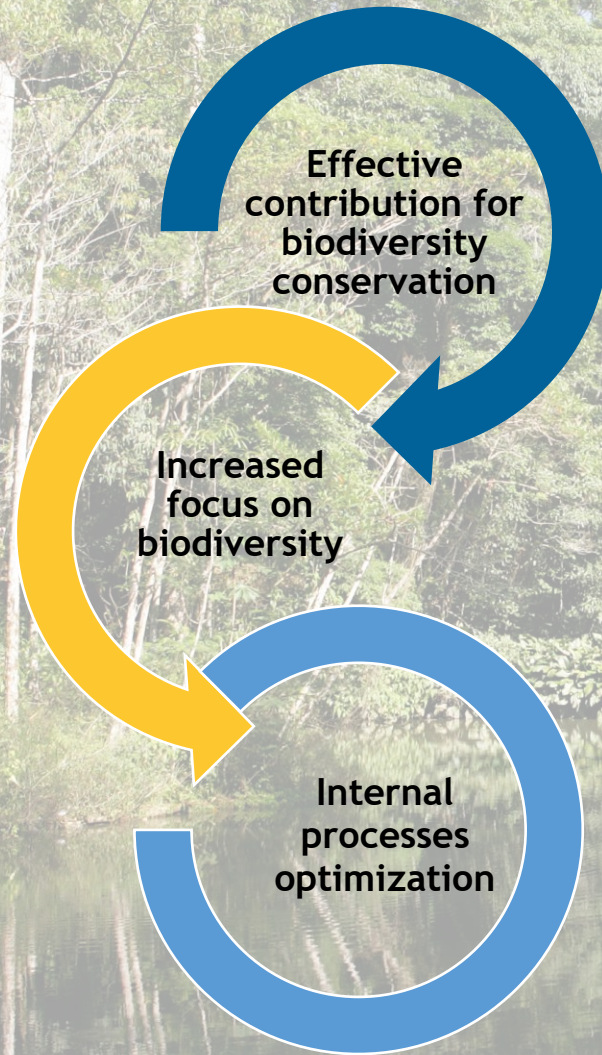
22.395 employees

RETROSPECTIVA 2022

- Biodiversity capacity building trail
- Participating in national /international forums (CBD)
- Business and Biodiversity forums
- Commemorative dates
- Presentations
- Social media



FINAL REMARKS



- Continuous improvement
- Business value
- Biodiversity value culture

Segurança, Meio Ambiente e Saúde

